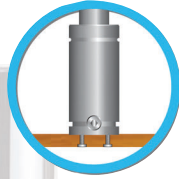


Dikkat



Gaz dolumunda sadece nitrojen (N₂) kullanınız



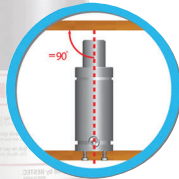
Gazlı yayı civata veya bağlama pabucuyla monte ediniz



Gövde veya pime darbe uygulamayınız



Yağlama yapmayınız



Plakaya dik monte ediniz



Çalışma esnasında gazlı yayın ısı 80°C'nin altında olmalıdır

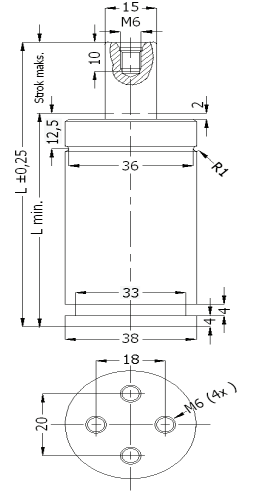


D100.01_00250

Kullanılan Gaz : Nitrojen N₂ / Nitrogen N₂
Maksimum Dolum Basıncı : 150 Bar
Minimum Dolum Basıncı : 50 Bar
Çalışma Sıcaklığı : 0°C / +80°C

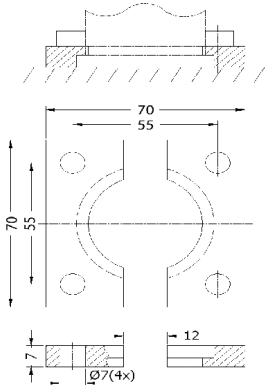
Sıcaklığa Bağlı Kuvvet Artışı : ±0.3%/°C
Önerilen Strok/dk. : 80 - 100 (20°C)
Maksimum Piston Hızı : 1.6 m/s

Sipariş Kodu	PSA Mabec Code	Strok Maks. Stroke Max.	l min	l
D100.01_00250.010	X346590038	10	60	70
013		12,7	62,7	75,4
016	X346590039	16	66	82
019		19	69	88
025	X346590037	25	75	100
038		38,1	88,1	126,2
050	X346590036	50	100	150
063	Z000382437	63,5	113,5	177
080	X346590261	80	130	210
100		100	150	250



D100.50.01_00250

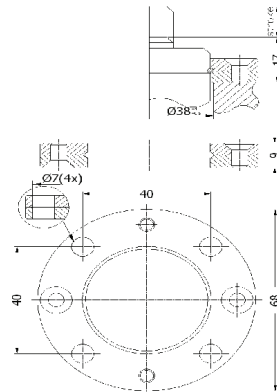
Gazlı Yay Bağlama Pabucu
 Malzeme : Çelik



Sipariş Kodu	PSA Mabec Code
D100.50.01_00250	Z000304144

D100.50.02_00250

Gazlı Yay Bağlama Pabucu
 Malzeme : Çelik



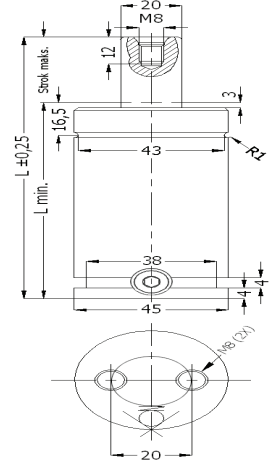
Sipariş Kodu	PSA Mabec Code
D100.50.02_00250	X346591660

D100.01_00500

Kullanılan Gaz : Nitrojen N₂ / Nitrogen N₂
 Maksimum Dolu Basıncı : 150 Bar
 Minimum Dolu Basıncı : 25 Bar
 Çalışma Sıcaklığı : 0°C / +80°C

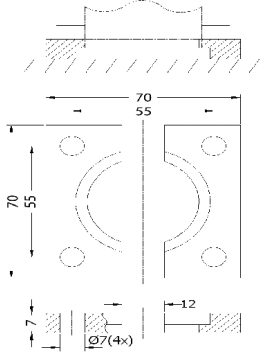
Sıcaklığa Bağlı Kuvvet Artışı : ±0.3%/°C
 Önerilen Strok/dk. : 40 - 80 (20°C)
 Maksimum Piston Hızı : 1.6 m/s

Sipariş Kodu	PSA Mabec Code	Strok Maks. Stroke Max.	l min	l
D100.01_00500.010		10	95	105
013		12,7	97,7	110,4
016		16	101	117
019		19	104	123
025	X346590337	25	110	135
038		38,1	123,1	161,2
050	X346590336	50	135	185
063	Z000234960	63,5	148,5	212
080	X346590335	80	165	245
100		100	185	285
125		125	210	335



D100.50.01_00500

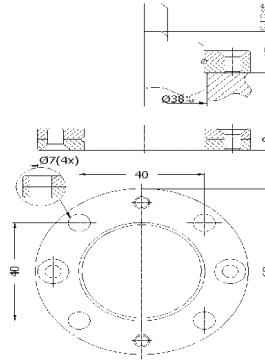
Gazlı Yay Bağlama Pabucu
 Malzeme : Çelik



Sipariş Kodu	PSA Mabec Code
D100.50.01_00500	Z000243509

D100.50.02_00500

Gazlı Yay Bağlama Pabucu
 Malzeme : Çelik



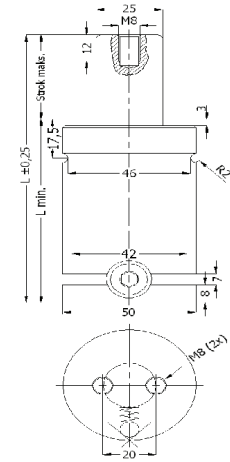
Sipariş Kodu	PSA Mabec Code
D100.50.02_00500	Z000461359

D100.01_00750

Kullanılan Gaz : Nitrojen N₂ / Nitrogen N₂
 Maksimum Dolu Basıncı : 150 Bar
 Minimum Dolu Basıncı : 25 Bar
 Çalışma Sıcaklığı : 0°C / +80°C

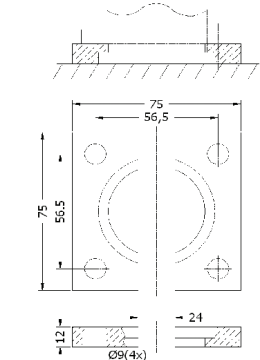
Sıcaklığa Bağlı Kuvvet Artışı : ±0.3%/°C
 Önerilen Strok/dk. : 15 - 40 (20°C)
 Maksimum Piston Hızı : 1.6 m/s

Sipariş Kodu	PSA Mabec Code	Strok Maks. Stroke Max.	l min	l
D100.01_00750.013		12,7	107,7	120,4
025	X346590035	25	120	145
038		38,1	133,1	171,2
050	X346590034	50	145	195
063	Z000304414	63,5	158,5	222
080	X346590033	80	175	255
100	X346590032	100	195	295
125	X346590260	125	220	345
160	X346590253	160	255	415



D100.50.01_00750

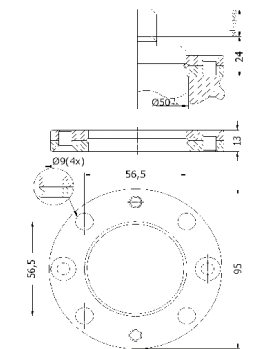
Gazlı Yay Bağlama Pabucu
 Malzeme : Çelik



Sipariş Kodu	PSA Mabec Code
D100.50.01_00750	X346591692

D100.50.02_00750

Gazlı Yay Bağlama Pabucu
 Malzeme : Çelik



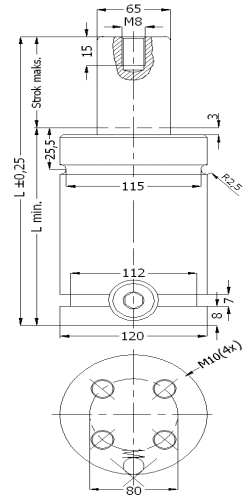
Sipariş Kodu	PSA Mabec Code
D100.50.02_00750	X346591659

D100.01_05000

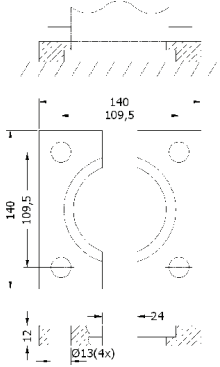
Kullanılan Gaz : Nitrojen N₂ / Nitrogen N₂
 Maksimum Dolum Basıncı : 150 Bar
 Minimum Dolum Basıncı : 25 Bar
 Çalışma Sıcaklığı : 0°C / +80°C

Sıcaklığa Bağlı Kuvvet Artışı : ±0.3%/°C
 Önerilen Strok/dk. : 15 - 40 (20°C)
 Maksimum Piston Hızı : 1.6 m/s

Sipariş Kodu	PSA Mabec Code	Strok Maks. Stroke Max.	l min	l
D100.01_05000.025	Z000410553	25	165	190
038		38,1	178,1	216,2
050	X346590027	50	190	240
063		63,5	203,5	267
080	Z000492151	80	220	300
100	Z000301877	100	240	340
125	Z000239128	125	265	390
160		160	300	460


D100.50.01_05000

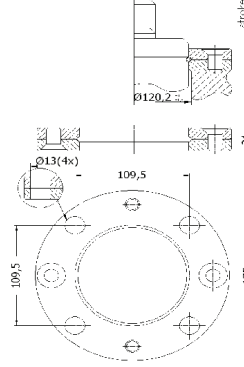
Gazlı Yay Bağlama Pabucu
 Malzeme : Çelik



Sipariş Kodu	PSA Mabec Code
D100.50.01_05000	X346591688

D100.50.02_05000

Gazlı Yay Bağlama Pabucu
 Malzeme : Çelik



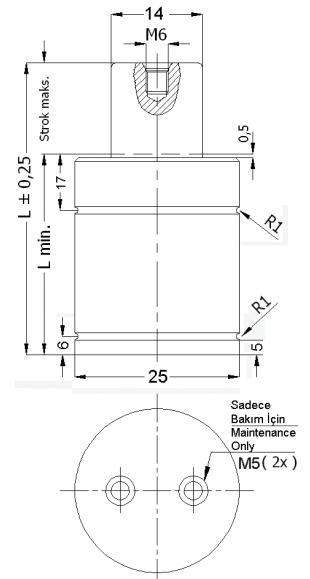
Sipariş Kodu	PSA Mabec Code
D100.50.02_05000	X346591656

D100.02_00320

Kullanılan Gaz : Nitrojen N₂ / Nitrogen N₂
 Maksimum Dolum Basıncı : 150 Bar
 Minimum Dolum Basıncı : 25 Bar
 Çalışma Sıcaklığı : 0°C / +80°C

Sıcaklığa Bağlı Kuvvet Artışı : ±0.3%/°C
 Önerilen Strok/dk. : 15 - 40 (20°C)
 Maksimum Piston Hızı : 1.6 m/s

Sipariş Kodu	Strok Maks. Stroke Max.	l min	l
D100.02_00320.007	7	37	44
010	10	40	50
015	15	45	60
019	19	49	68
025	25	55	80
038	38	68	106
050	50	80	130
063	63	93	156
075	75	110	185
080	80	115	195
100	100	135	235
125	125	160	285

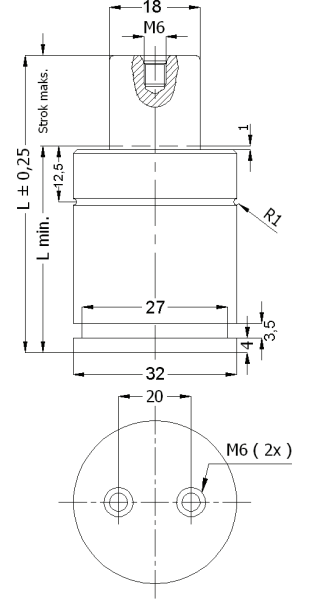


D100.02_00350

Kullanılan Gaz : Nitrojen N₂ / Nitrogen N₂
Maksimum Dolum Basıncı : 150 Bar
Minimum Dolum Basıncı : 25 Bar
Çalışma Sıcaklığı : 0°C / +80°C

Sıcaklığa Bağlı Kuvvet Artışı : ±0.3%/°C
Önerilen Strok/dk. : 20 - 100 (20°C)
Maksimum Piston Hızı : 1.6 m/s

Sipariş Kodu	Strok Maks. Stroke Max.	l min	l
D100.02_00350.010	10	40	50
013	13	43	56
016	16	46	62
019	19	49	68
025	25	55	80
032	32	62	94
038	38	68	106
050	50	80	130
063	63	93	156
075	75	105	180
080	80	110	190
100	100	130	230
125	125	155	280

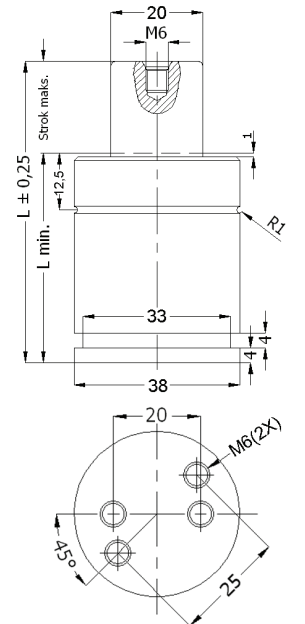


D100.02_00500

Kullanılan Gaz : Nitrojen N₂ / Nitrogen N₂
Maksimum Dolum Basıncı : 150 Bar
Minimum Dolum Basıncı : 25 Bar
Çalışma Sıcaklığı : 0°C / +80°C

Sıcaklığa Bağlı Kuvvet Artışı : ±0.3%/°C
Önerilen Strok/dk. : 20 - 100 (20°C)
Maksimum Piston Hızı : 1.6 m/s

Sipariş Kodu	PSA Mabec Code	Strok Maks. Stroke Max.	l min	l
D100.02_00500.010	Z000459071	10	40	50
013		13	43	56
016	Z000459074	16	46	62
019		19	49	68
025	Z000459075	25	55	80
032		32	62	94
038		38	68	106
050	Z000504472	50	80	130
063		63	93	156
075		75	105	180
080	Z000459076	80	110	190
100	Z000459077	100	130	230
125	Z000459078	125	155	280

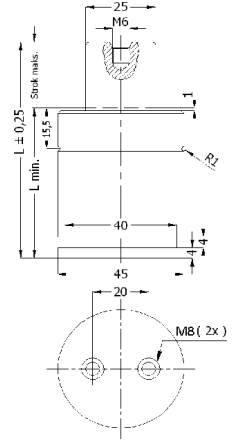


D100.02_00750

Kullanılan Gaz : Nitrojen N₂ / Nitrogen N₂
 Maksimum Dolum Basıncı : 150 Bar
 Minimum Dolum Basıncı : 25 Bar
 Çalışma Sıcaklığı : 0°C / +80°C

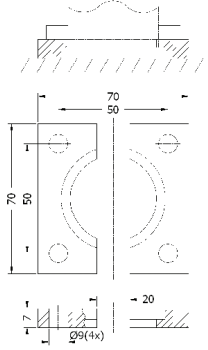
Sıcaklığa Bağlı Kuvvet Artışı : ±0.3%/°C
 Önerilen Strok/dk. : 15 - 40 (20°C)
 Maksimum Piston Hızı : 1.6 m/s

Sipariş Kodu	PSA Mabec Code	Strok Maks. Stroke Max.	l min	l
D100.02_00750.010	Z000459079	10	42	52
013		13	45	58
016	Z000459080	16	48	64
019		19	51	70
025	Z000459087	25	57	82
032		32	64	96
038		38	70	108
050	Z000459088	50	82	132
063	Z000459089	63	95	158
075		75	107	182
080	Z000459090	80	112	192
100	Z000459208	100	132	232
125	Z000459165	125	157	282



D100.50.01_00500

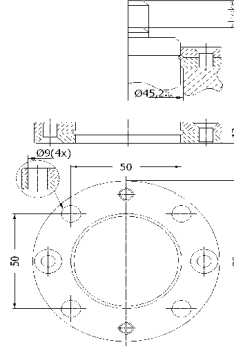
Gazlı Yay Bağlama Pabucu
 Malzeme : Çelik



Sipariş Kodu	PSA Mabec Code
D100.50.01_00500	Z000243509

D100.50.02_00500

Gazlı Yay Bağlama Pabucu
 Malzeme : Çelik



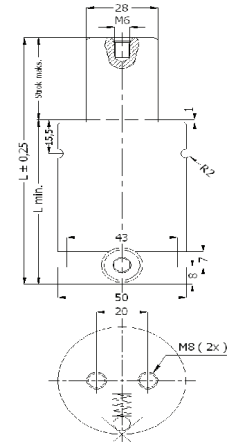
Sipariş Kodu	PSA Mabec Code
D100.50.02_00500	Z000461359

D100.02_01000

Kullanılan Gaz : Nitrojen N₂ / Nitrogen N₂
 Maksimum Dolum Basıncı : 150 Bar
 Minimum Dolum Basıncı : 25 Bar
 Çalışma Sıcaklığı : 0°C / +80°C

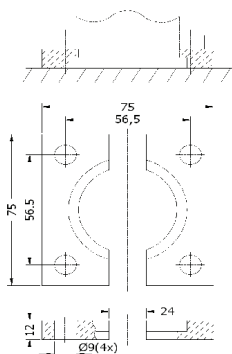
Sıcaklığa Bağlı Kuvvet Artışı : ±0.3%/°C
 Önerilen Strok/dk. : 15 - 40 (20°C)
 Maksimum Piston Hızı : 1.6 m/s

Sipariş Kodu	PSA Mabec Code	Strok Maks. Stroke Max.	l min	l
D100.02_01000.013		13	51	64
016	Z000459167	16	54	70
019		19	57	76
025	Z000459168	25	63	88
032		32	70	102
038		38	76	114
050	Z000376302	50	88	138
063	Z000459169	63	101	164
075		75	113	188
080	Z000459170	80	118	198
100	Z000459171	100	138	238
125	Z000459173	125	163	288



D100.50.01_00750

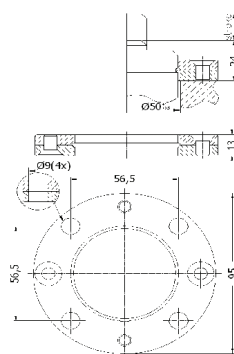
Gazlı Yay Bağlama Pabucu
 Malzeme : Çelik



Sipariş Kodu	PSA Mabec Code
D100.50.01_00750	X346591692

D100.50.02_00750

Gazlı Yay Bağlama Pabucu
 Malzeme : Çelik



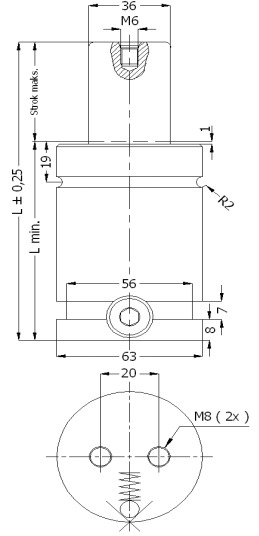
Sipariş Kodu	PSA Mabec Code
D100.50.02_00750	X346591659

D100.02_01500

Kullanılan Gaz : Nitrojen N₂ / Nitrogen N₂
 Maksimum Dolum Basıncı : 150 Bar
 Minimum Dolum Basıncı : 25 Bar
 Çalışma Sıcaklığı : 0°C / +80°C

Sıcaklığa Bağlı Kuvvet Artışı : ±0.3%/°C
 Önerilen Strok/dk. : 50 - 100 (20°C)
 Maksimum Piston Hızı : 1.6 m/s

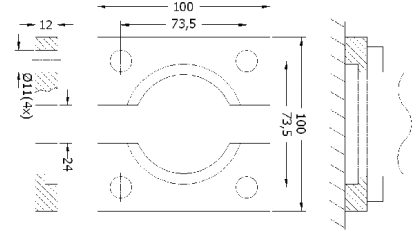
Sipariş Kodu	Strok Maks. Stroke Max.	l min	l
D100.02_01500.013	13	57	70
016	16	60	76
019	19	63	82
025	25	69	94
032	32	76	108
038	38	82	120
050	50	94	144
063	63	107	170
075	75	119	194
080	80	124	204
100	100	144	244
125	125	169	294



D100.50.01_01000

Gazlı Yay Bağlama Pabucu
 Malzeme : Çelik

Sipariş Kodu
D100.50.01_01000

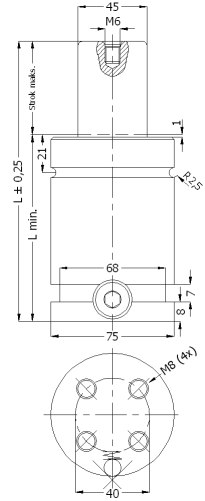


D100.02_02400

Kullanılan Gaz : Nitrojen N₂ / Nitrogen N₂
 Maksimum Dolum Basıncı : 150 Bar
 Minimum Dolum Basıncı : 25 Bar
 Çalışma Sıcaklığı : 0°C / +80°C

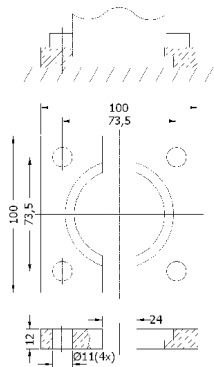
Sıcaklığa Bağlı Kuvvet Artışı : ±0.3%/°C
 Önerilen Strok/dk. : 20 - 100 (20°C)
 Maksimum Piston Hızı : 1.6 m/s

Sipariş Kodu	PSA Mabec Code	Strok Maks. Stroke Max.	l min	l
D100.02_02400.016	Z000459174	16	61	77
019		19	64	83
025	Z000410552	25	70	95
032		32	77	109
038		38	83	121
050	Z000459175	50	95	145
063	Z000459177	63	108	171
075		75	120	195
080	Z000365402	80	125	205
100	Z000459178	100	145	245
125	Z000459179	125	170	295



D100.50.01_01500

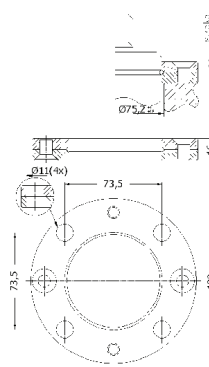
Gazlı Yay Bağlama Pabucu
 Malzeme : Çelik



Sipariş Kodu	PSA Mabec Code
D100.50.01_01500	X346591670

D100.50.02_01500

Gazlı Yay Bağlama Pabucu
 Malzeme : Çelik



Sipariş Kodu	PSA Mabec Code
D100.50.02_01500	X346591658

